



**VENDIM**  
**Nr.299, datë 24.4.2026**

**PËR SHPALLJEN E DISA ZONAVE ME  
PËRPARËSI ZHVILLIMIN E  
EKONOMISË MALORE NË  
BASHKINË KURBIN**

Në mbështetje të nenit 100 të Kushtetutës dhe të pikës 1, të nenit 4, të ligjit nr.20/2025, “Për paketën e maleve”, me propozimin e ministrit të Shtetit për Pushtetin Vendor, Këshilli i Ministrave

**VENDOSI:**

1. Shpalljen “Zonë me përparësi zhvillimin e ekonomisë malore” në territorin e Bashkisë Kurbin të zonave, si më poshtë vijon:

a) Zona nr.1, fshatrat Gjorm, Zhejë, Shëmri, Shpërthet, zonat kadastrale 2120, 3924, 3336, 3412, 3295 dhe 1768, pjesë të njësisë administrative Mamurras, Bashkia Kurbin, Qarku Lezhë, me sipërfaqe 1918 (një mijë e nëntëqind e tetëmbëdhjetë) ha, sipas hartës në sistemin KRGJSH;

b) Zona nr.2, fshatrat Ferr-Shkopet, Shkopet, zona kadastrale 3391, pjesë e njësisë

administrative Milot, Bashkia Kurbin, Qarku Lezhë, me sipërfaqe 487 (katërqind e tetëdhjetë e shtatë) ha, sipas hartës në sistemin KRGJSH;

c) Zona nr.3, fshatrat Selitë, Delbnisht, Mal i Bardhë i Sipërm, Mal Milot, Skuraj, Gallatë, Gernac, Vinjoll, zonat kadastrale 2365, 1458, 2580, 3295, 3780, 3469, pjesë të njësisë administrative Milot, Bashkia Kurbin, Qarku Lezhë, me sipërfaqe 8003 (tetë mijë e tre) ha, sipas hartës në sistemin KRGJSH.

2. Shtrirja, kufijt dhe pikat e hyrjes e të daljes së këtyre zonave përcaktohen në hartën treguese sipas sistemit KRGJSH, që i bashkëlidhet këtij vendimi.

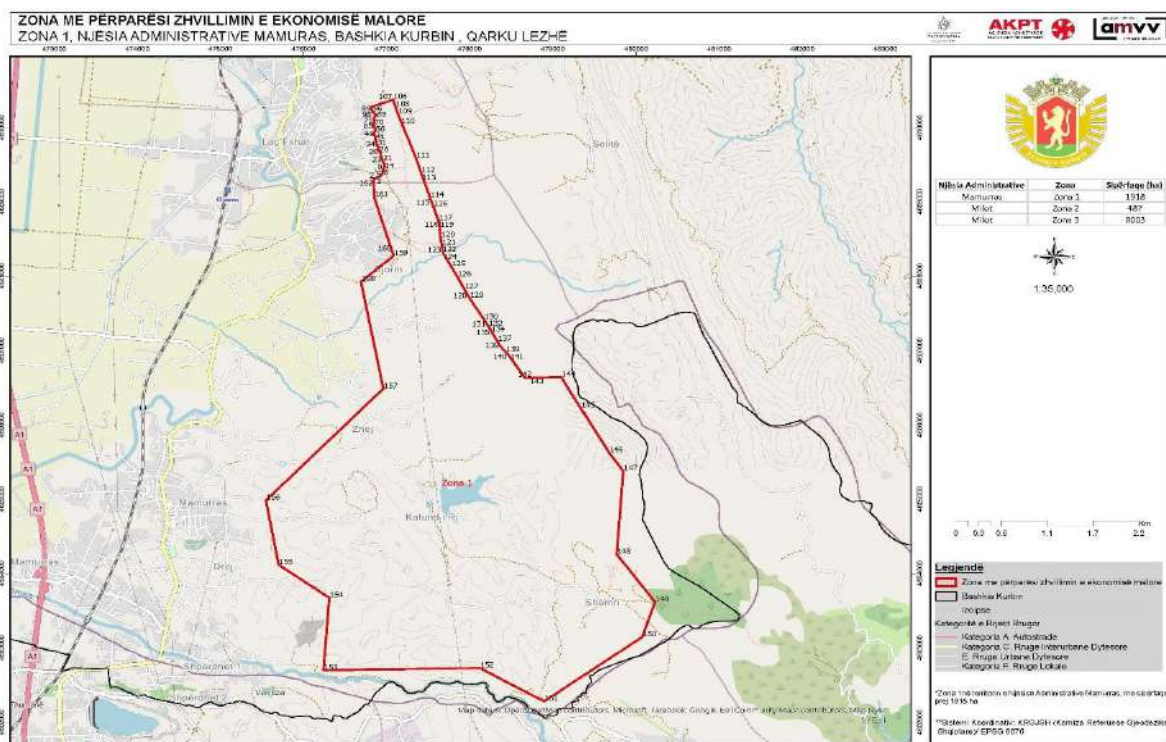
3. Llojet e aktiviteteve, që do të zhvillohen në këtë zonë, janë:

- a) të zhvillimit ekonomik;
- b) të zhvillimit industrial;
- c) të zhvillimit turistik.

4. Ngarkohen Ministria e Ekonomisë dhe Inovacionit, Agjencia Shtetërore e Kadastrës dhe Bashkia Kurbin për zbatimin e këtij vendimi.

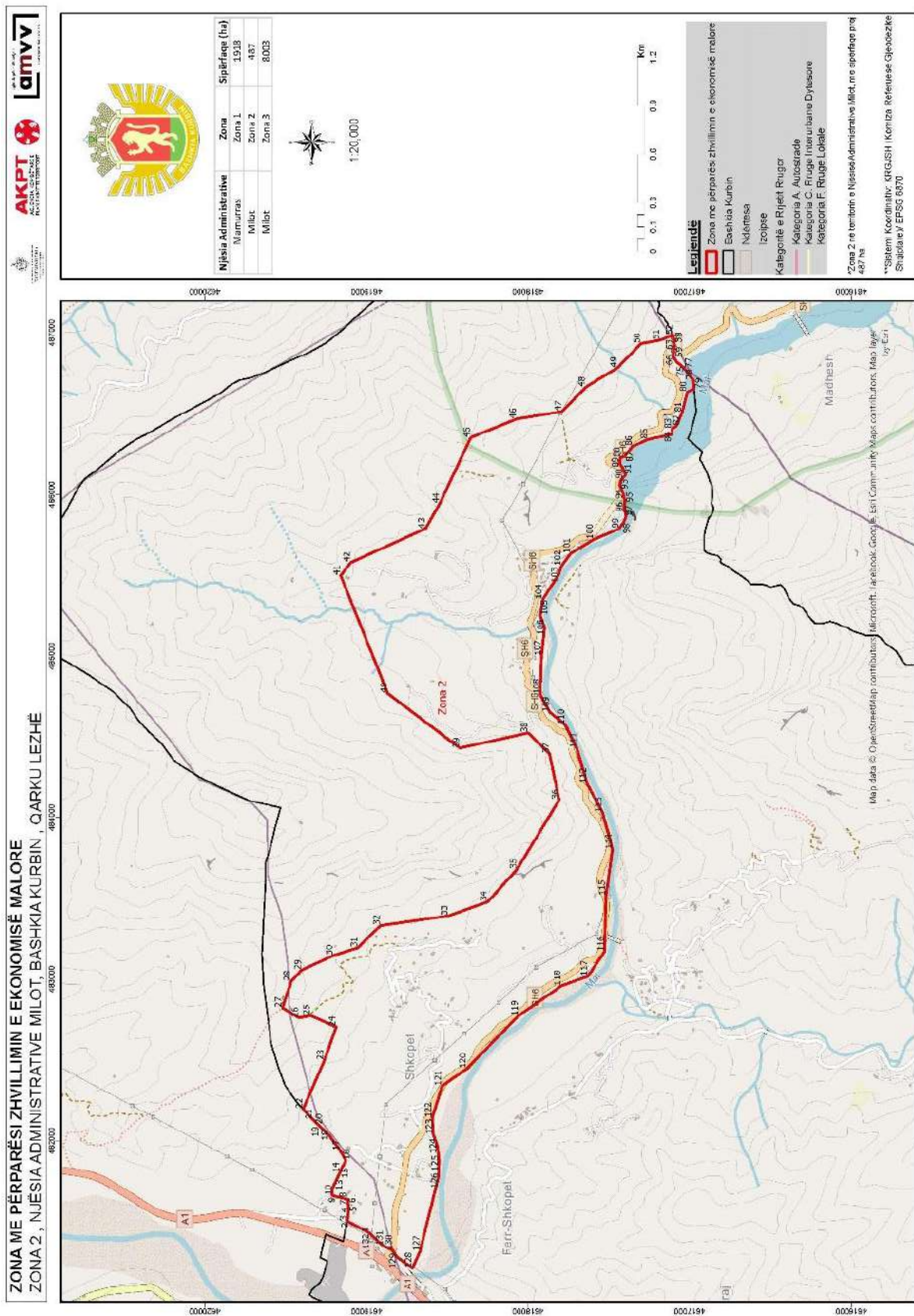
Ky vendim hyn në fuqi pas botimit në Fletoren Zyrtare.

**KRYEMINISTËR**  
**Edi Rama**



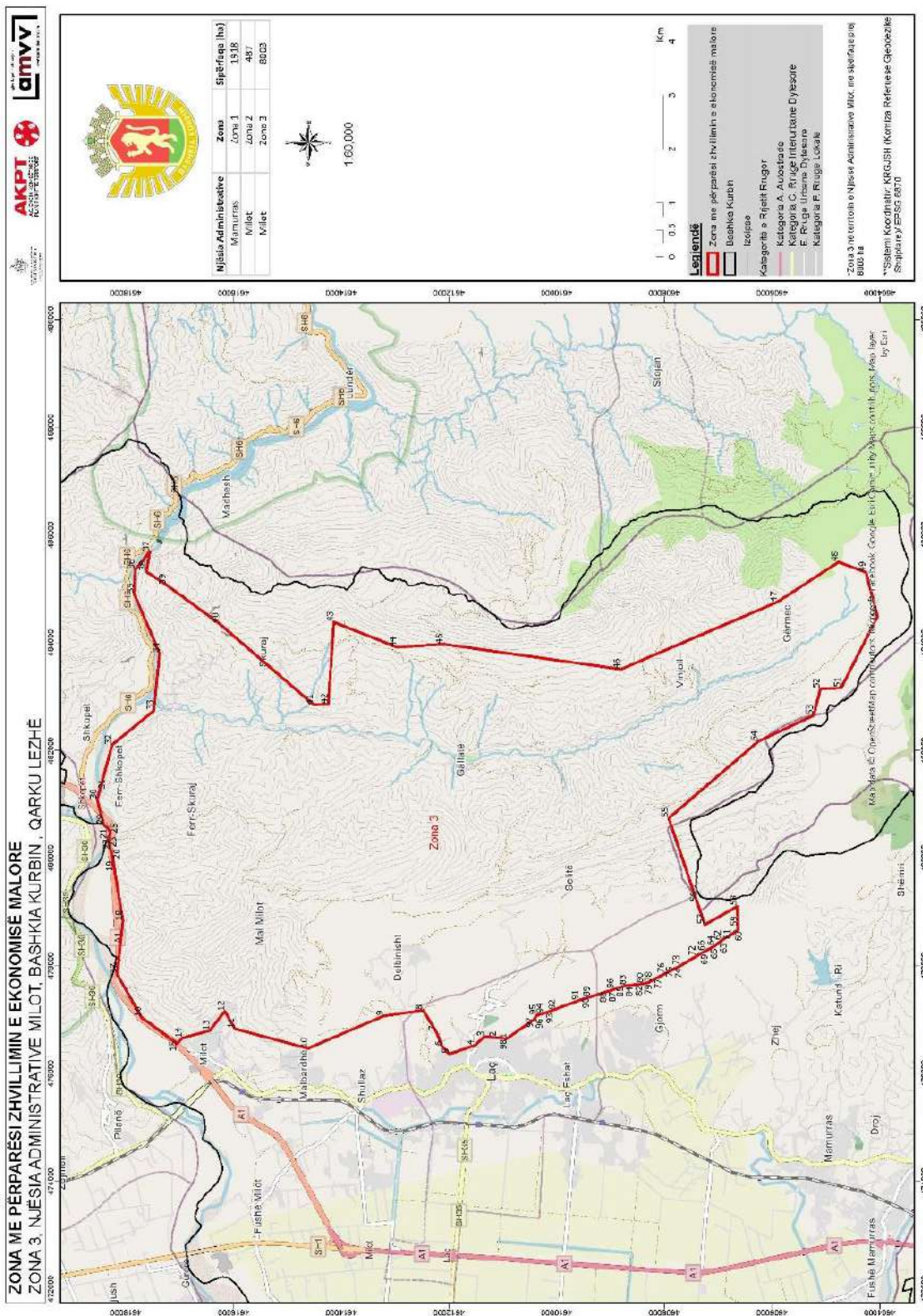


Zona 1								
Njësia Administrative Mamurras								
Nr.	Koordinata X	Koordinata Y	Nr.	Koordinata X	Koordinata Y	Nr.	Koordinata X	Koordinata Y
1	476844.146	4609301.079	55	476853.8512	4609942.313	109	477138.003	4610178.966
2	476861.568	4609313.862	56	476859.4791	4609955.603	110	477169.736	4610092.525
3	476895.867	4609332.186	57	476865.4085	4609969.626	111	477354.687	4609588.76
4	476910.074	4609339.773	58	476865.8806	4609973.773	112	477417.542	4609389.932
5	476945.409	4609368.812	59	476866.1896	4609976.457	113	477422.475	4609374.344
6	476959.959	4609409.815	60	476866.7969	4609981.886	114	477522.838	4609056.89
7	476959.65	4609411.392	61	476861.8837	4609990.642	115	477527.583	4609042.73
8	476957.314	4609423.049	62	476857.4097	4609998.623	116	477563.933	4608934.245
9	476956.964	4609424.805	63	476849.5262	4610012.506	117	477625.358	4608750.916
10	476959.387	4609439.308	64	476849.1798	4610013.043	118	477633.43	4608726.841
11	476960.042	4609443.147	65	476843.4329	4610020.378	119	477635.155	4608705.714
12	476962.308	4609449.635	66	476841.4427	4610022.926	120	477650.585	4608517.199
13	476968.666	4609468.125	67	476841.0305	4610026.553	121	477665.061	4608416.973
14	476970.264	4609470.915	68	476839.7626	4610036.691	122	477669.748	4608384.567
15	476978.048	4609484.599	69	476840.3752	4610048.562	123	477670.619	4608378.515
16	476980.822	4609489.473	70	476846.3722	4610059.345	124	477679.646	4608315.989
17	476980.64	4609492.272	71	476846.771	4610061.181	125	477780.476	4608126.463
18	476980.115	4609500.429	72	476848.1949	4610067.789	126	477853.215	4607989.75
19	476979.884	4609504.007	73	476850.6201	4610072.589	127	477937.532	4607825.902
20	476978.012	4609506.676	74	476850.9207	4610073.403	128	477979.706	4607743.943
21	476952.641	4609543.115	75	476851.9269	4610075.485	129	477999.897	4607704.704
22	476949.057	4609559.769	76	476851.8924	4610078.466	130	478175.12	4607411.755
23	476947.789	4609565.636	77	476851.7972	4610086.677	131	478205.132	4607361.576
24	476944.855	4609577.086	78	476851.7849	4610087.738	132	478230.747	4607318.758
25	476924.543	4609656.077	79	476851.462	4610088.834	133	478234.141	4607312.446
26	476907.006	4609700.148	80	476851.2805	4610089.823	134	478253.045	4607277.263
27	476906.82	4609700.666	81	476849.4382	4610096.874	135	478257.155	4607269.608
28	476902.608	4609718.803	82	476847.8462	4610103.037	136	478272.082	4607241.821
29	476897.532	4609740.732	83	476846.9766	4610106.428	137	478335.562	4607123.657
30	476883.962	4609755.89	84	476847.0549	4610107.439	138	478365.713	4607067.527
31	476883.366	4609758.124	85	476848.1084	4610120.106	139	478434.863	4606979.759
32	476879.972	4609769.618	86	476853.5002	4610130.462	140	478460.133	4606947.681
33	476876.542	4609786.704	87	476856.2573	4610135.105	141	478480.591	4606921.719
34	476874.823	4609795.267	88	476860.712	4610142.59	142	478664.639	4606632.894
35	476873.676	4609800.966	89	476873.5656	4610161.635	143	478722.448	4606634.087
36	476873.071	4609803.99	90	476869.8227	4610173.856	144	479103.062	4606641.943
37	476864.012	4609826.942	91	476862.2158	4610181.99	145	479337.66	4606224.68
38	476863.6	4609827.988	92	476855.4332	4610189.784	146	479674.425	4605625.702
39	476863.641	4609839.082	93	476847.1109	4610196.64	147	479845.225	4605379.302
40	476863.597	4609842.903	94	476846.2725	4610197.34	148	479765.425	4604260.702
41	476863.697	4609853.247	95	476838.4551	4610203.792	149	480227.425	4603619.502
42	476865.326	4609861.119	96	476833.0588	4610211.952	150	480073.425	4603150.502
43	476867.439	4609871.287	97	476830.8496	4610215.268	151	478897.425	4602282.502
44	476867.676	4609872.43	98	476826.0666	4610222.285	152	478123.925	4602730.502
45	476864.881	4609883.121	99	476823.5981	4610231.579	153	476240.925	4602702.502
46	476863.203	4609886.383	100	476823.2029	4610232.875	154	476310.925	4603675.502
47	476862.333	4609888.073	101	476822.0846	4610236.153	155	475701.925	4604116.502
48	476860.654	4609891.345	102	476817.9211	4610254.451	156	475547.925	4604984.502
49	476858.219	4609896.058	103	476817.8369	4610254.81	157	476961.925	4606488.502
50	476851.097	4609912.421	104	476813.8238	4610274.8	158	476692.425	4607924.502
51	476850.448	4609924.398	105	476814.3812	4610275.037	159	477084.425	4608274.502
52	476850.186	4609928.876	106	477079.2568	4610373.64	160	477066.153	4608336.516
53	476851.059	4609932.087	107	477079.4948	4610372.963	161	476853.425	4609058.502
54	476851.942	4609935.319	108	477104.3803	4610290.394	162	476844.146	4609301.079





Zona 2								
Njësia Administrative Milot								
Nr.	Koordinata X	Koordinata Y	Nr.	Koordinata X	Koordinata Y	Nr.	Koordinata X	Koordinata Y
1	481430.04	4618984.804	45	486351.893	4618354.98	89	486190.696	4617433.906
2	481499.76	4619114.724	46	486466.49	4618072.026	90	486164.656	4617416.266
3	481500.932	4619118.397	47	486512.778	4617790.387	91	486120.976	4617396.946
4	481554.853	4619111.437	48	486662.874	4617645.007	92	486084.576	4617427.746
5	481595.607	4619111.91	49	486783.974	4617446.207	93	486057.696	4617433.066
6	481632.072	4619117.098	50	486932.696	4617302.726	94	486003.656	4617412.066
7	481637.898	4619118.29	51	486954.116	4617184.234	95	485947.096	4617399.746
8	481644.717	4619147.946	52	486985.875	4617103.503	96	485921.056	4617408.426
9	481654.488	4619191.186	53	486977.362	4617100.884	97	485863.376	4617393.586
10	481662.895	4619212.704	54	486963.216	4617100.999	98	485827.536	4617409.266
11	481688.967	4619211.982	55	486960.026	4617098.301	99	485787.496	4617437.126
12	481702.729	4619212.142	56	486959.635	4617095.776	100	485719.833	4617594.653
13	481732.528	4619198.724	57	486951.52	4617095.122	101	485632.577	4617738.245
14	481801.204	4619165.114	58	486936.393	4617095.226	102	485557.595	4617793
15	481839.524	4619149.183	59	486916.517	4617094.295	103	485502.25	4617812.747
16	481876.373	4619126.336	60	486907.53	4617096.292	104	485347.946	4617909.996
17	481937.836	4619162.862	61	486903.303	4617098.398	105	485248.313	4617925.329
18	482034.437	4619231.741	62	486902.037	4617099.029	106	485177.333	4617898.169
19	482093.498	4619293.505	63	486893.194	4617100.747	107	484999.03	4617917.236
20	482098.208	4619298.43	64	486882.986	4617099.368	108	484760.63	4617925.433
21	482130.668	4619332.376	65	486874.995	4617100.115	109	484652.416	4617866.691
22	482195.768	4619392.48	66	486866.985	4617102.403	110	484572.699	4617770.402
23	482495.645	4619261.339	67	486854.482	4617105.759	111	484428.554	4617698.529
24	482703.897	4619188.004	68	486846.943	4617103.711	112	484209.733	4617635.298
25	482774.597	4619346.904	69	486844.886	4617099.906	113	484030.479	4617538.843
26	482760.037	4619419.564	70	486843.131	4617094.283	114	483801.57	4617478.501
27	482822.757	4619520.084	71	486834.63	4617090.683	115	483513.875	4617518.603
28	482985.717	4619466.324	72	486826.146	4617085.543	116	483169.186	4617528.425
29	483055.717	4619401.924	73	486814.641	4617075.326	117	483018.166	4617629.407
30	483145.317	4619205.924	74	486805.962	4617063.508	118	482957.338	4617797.368
31	483194.067	4619053.435	75	486798.244	4617052.998	119	482771.18	4618061.876
32	483331.276	4618914.135	76	486794.163	4617048.647	120	482444.914	4618380.792
33	483390.832	4618493.718	77	486781.644	4617035.299	121	482339.197	4618532.548
34	483478.276	4618250.092	78	486707.875	4616978.623	122	482141.245	4618593.147
35	483679.876	4618068.792	79	486651.859	4616973.166	123	482038.205	4618586.707
36	484108.484	4617808.349	80	486633.796	4617015.726	124	481969.045	4618562.067
37	484395.484	4617868.549	81	486506.396	4617047.226	125	481880.005	4618551.987
38	484523.584	4617999.449	82	486422.396	4617082.926	126	481778.645	4618554.507
39	484429.784	4618422.249	83	486406.296	4617109.526	127	481316.153	4618668.669
40	484768.295	4618868.908	84	486371.296	4617108.126	128	481211.64	4618716.144
41	485497.404	4619159.949	85	486340.496	4617258.626	129	481281.08	4618812.184
42	485578.604	4619096.949	86	486296.796	4617354.526	130	481321.4	4618838.084
43	485788.449	4618633.644	87	486233.396	4617403.626	131	481348.28	4618896.324
44	485944.549	4618545.93	88	486227.376	4617428.866	132	481430.04	4618984.804





Zona 3								
Njësia Administrative Milot								
Nr.	Koordinata X	Koordinata Y	Nr.	Koordinata X	Koordinata Y	Nr.	Koordinata X	Koordinata Y
1	476648.698	4610927.74	34	483801.927	4617374.22	67	478257.1549	4607269.608
2	476671.996	4611182.71	35	484907.292	4617844.84	68	478253.0448	4607277.263
3	476685.938	4611335.29	36	485354.2981	4617826.38	69	478234.1409	4607312.446
4	476522.978	4611519.81	37	485690.607	4617553.41	70	478230.7466	4607318.758
5	476360.998	4611995.11	38	485318.912	4617617.1	71	478205.1319	4607361.576
6	476502.958	4612125.44	39	485073.96	4617246.85	72	478175.1204	4607411.755
7	476779.458	4612237.58	40	484358.419	4616268.02	73	477999.8972	4607704.704
8	477173.978	4612478.48	41	482848.633	4614512.08	74	477979.7057	4607743.943
9	477067.446	4613215.58	42	482862.195	4614240.16	75	477937.5319	4607825.902
10	476466.846	4614615.58	43	484383.263	4614135.36	76	477853.215	4607989.75
11	476831.546	4615974.28	44	483914.437	4612965.63	77	477780.4764	4608126.463
12	477155.646	4616161.18	45	483974.682	4612104.6	78	477679.6464	4608315.989
13	476796.546	4616439.78	46	483507.218	4608805.8	79	477670.6188	4608378.515
14	476658.385	4616950.61	47	484754.681	4605900.85	80	477669.7484	4608384.567
15	476555.485	4617046.51	48	485497.816	4604762.42	81	477665.0613	4608416.973
16	477042.621	4617707.67	49	485305.501	4604256.19	82	477650.585	4608517.199
17	477848.041	4618166.08	50	484487.997	4604040.75	83	477635.1552	4608705.714
18	478832.154	4618054.18	51	483161.828	4604716.12	84	477633.4298	4608726.841
19	479896.083	4618228.75	52	483143.56	4605102.58	85	477625.3581	4608750.916
20	480039.022	4618252.2	53	482648.724	4605227.96	86	477563.9329	4608934.245
21	480362.112	4618339.06	54	482171.26	4606253.99	87	477527.5834	4609042.73
22	480379.019	4618331.29	55	480740.596	4607919.96	88	477522.8377	4609056.89
23	480408.329	4618314.43	56	479173.1136	4607386.84	89	477422.4748	4609374.344
24	480424.362	4618301.38	57	478762.732	4607247.26	90	477417.5425	4609389.932
25	480450.948	4618291.1	58	479103.0616	4606641.94	91	477354.6869	4609588.76
26	480487.936	4618296.82	59	478722.4479	4606634.09	92	477169.7358	4610092.525
27	480522.186	4618310.45	60	478664.6388	4606632.89	93	477138.0032	4610178.966
28	480578.499	4618361.4	61	478480.5907	4606921.72	94	477104.3803	4610290.394
29	480613.544	4618406.65	62	478460.133	4606947.68	95	477079.4948	4610372.963
30	481082.301	4618532.67	63	478434.8629	4606979.76	96	477038.2927	4610398.167
31	481264.436	4618483.19	64	478365.7127	4607067.53	97	476996.9685	4610423.446
32	482102.854	4618255.41	65	478335.5623	4607123.66	98	476648.698	4610927.737
33	482737.141	4617480.87	66	478272.0819	4607241.82			